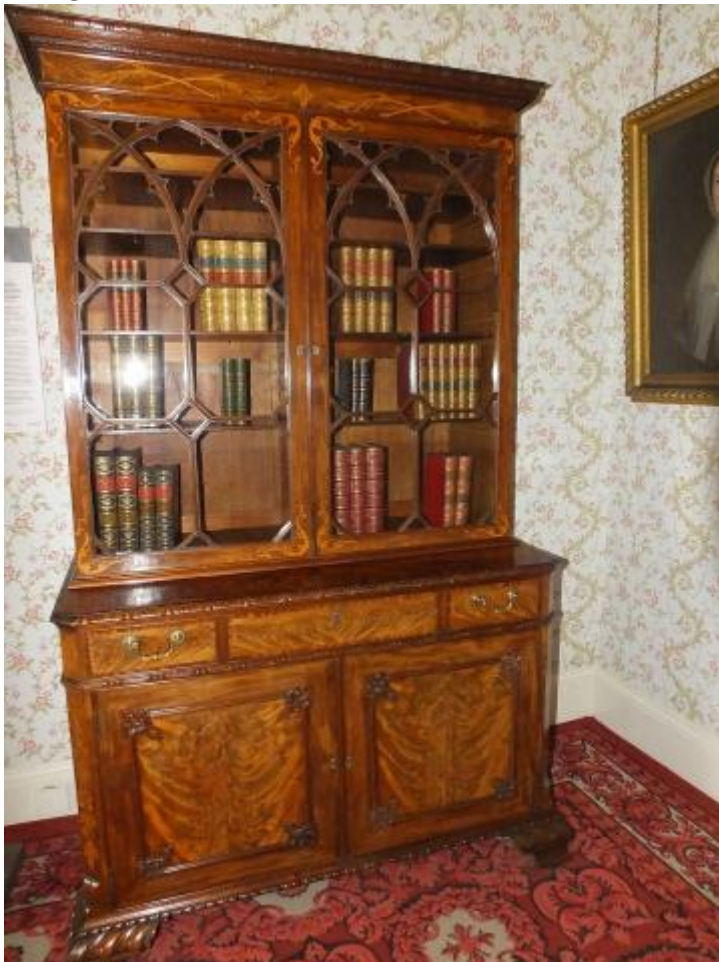


Purchase of the Rawlinson Bookcase, made by Gillows of Lancaster, 1772

The Rawlinson bookcase is a fully documented example of Gillows furniture, made approx. 40 years after the establishment of the Lancaster firm by Robert Gillow I. The bookcase is made of mahogany ornamented with carving, marquetry, book matched veneers with silver handles.

Image



Gillow bookcase made for Mary Hutton Rawlinson

Nation/region

North West

Grant awarded

£92,000

Award date

11/12/2007

Related News

"Gillow masterpiece" returns home

Thanks to continued local support and securing external funding, the unique mahogany bookcase has been transported from Apter - Fredericks Ltd of London to Lancaster to be displayed permanently at the Judges' Lodgings museum where the majority of its Gillow Collection of furniture is held.