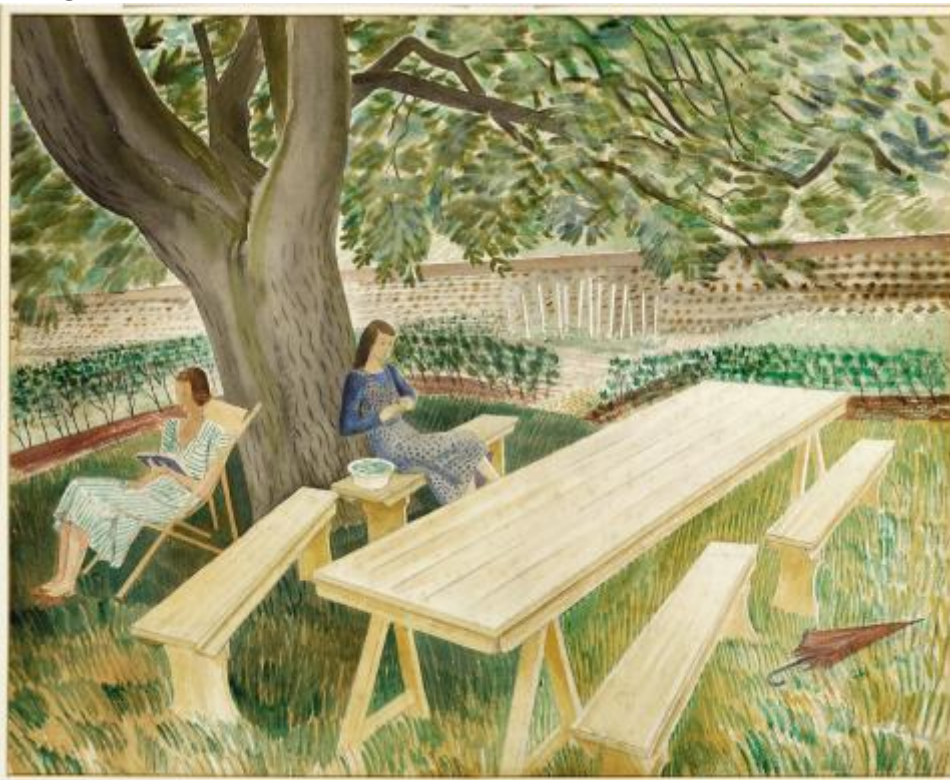


Acquisition of "Two Women in a Garden" by Eric Ravilious

Eric Ravilious is now established as one of the most popular artists of the twentieth century. His work across many media is highly prized and held in many galleries; the Fry Gallery has a significant collection of his work.

Two Women in a Garden is a rare early work by Eric and very important to the understanding of his work. The women are the artist Tizrah Ravilious, his wife, and Charlotte Bawden, who was married to Edward Bawden. The couples had moved to Brick House, Great Bardfield, together in the early 1930s. Charlotte is reading, while Tizrah is shelling peas.

Image



"Eric Ravilious, Two Women Sitting in a Garden, Watercolour and pencil, 1932/33

Region

East of England

Grant awarded

£130,000

Year awarded

2018

Related News

Rare Eric Ravilious watercolour saved for the nation

Fry Art Gallery secures work by influential 20th-century artist with major National Heritage Memorial Fund grant